

EarthNC Marine Charts - Map Screen



- 1. Locate/follow me
- 2. Download maps
- 3. Satellite view
- 4. Mark a waypoint

Swipe to customize – choose any statistic or graph.

Tip: Rotate for landscape view.

1. Locate me - Press this button to center the map on yourself. When it is green, it locks on to your position, until you move the map over a certain amount. This is the North Up mode. Touch the button again and it will turn purple. This is Track Up mode and the map will rotate as you move and change your bearing.

2. Download maps - This button lets you download a section of the map by drawing a rectangle with your finger. You can load saved maps via the Saved Screen. You can download up to 10,000 tiles on the 3GS/iPod and up to 10,000 tiles on the 3G - this amounts to several hundred megabytes of maps, depending on the map type. You can download as many areas as you like subject to available space on your device. To reduce space requirements, consider limiting the max zoom level. A zoom of 15 corresponds to most Coast/Approach chart scales while 17 is the maximum zoom in detailed harbor charts.

3. Satellite Maps - Switch to a Google satellite view. In this view, you can view waypoints, but your tracks won't show up, and you can't cache these maps for offline use, due to licensing restrictions.

4. Mark waypoint - Press this button to mark waypoints and toggle POI labels - you can drop a pin in the center of the map (Drop Pin), near you (Drop Pin Near Me), or you can quickly save a position with one long touch on the map and a release at the place you'd like a waypoint. While the waypoint is in edit mode, you can drag the waypoint pin to

adjust its location, enter a custom waypoint name, or adjust location by directly editing the lat/lon values.

To delete the waypoint without saving, hit cancel. To save the waypoint to your Saved table, hit Save. To save the waypoint and active distance/range/time guidance hit the Save & Guide button. In guide mode, a new info window will appear at the bottom of the map showing distance and bearing to the waypoint. Cancel Guide mode by hitting the red 'X' in the info window. Note that Guide Me does not consider water depths or other hazards - so use responsibly.

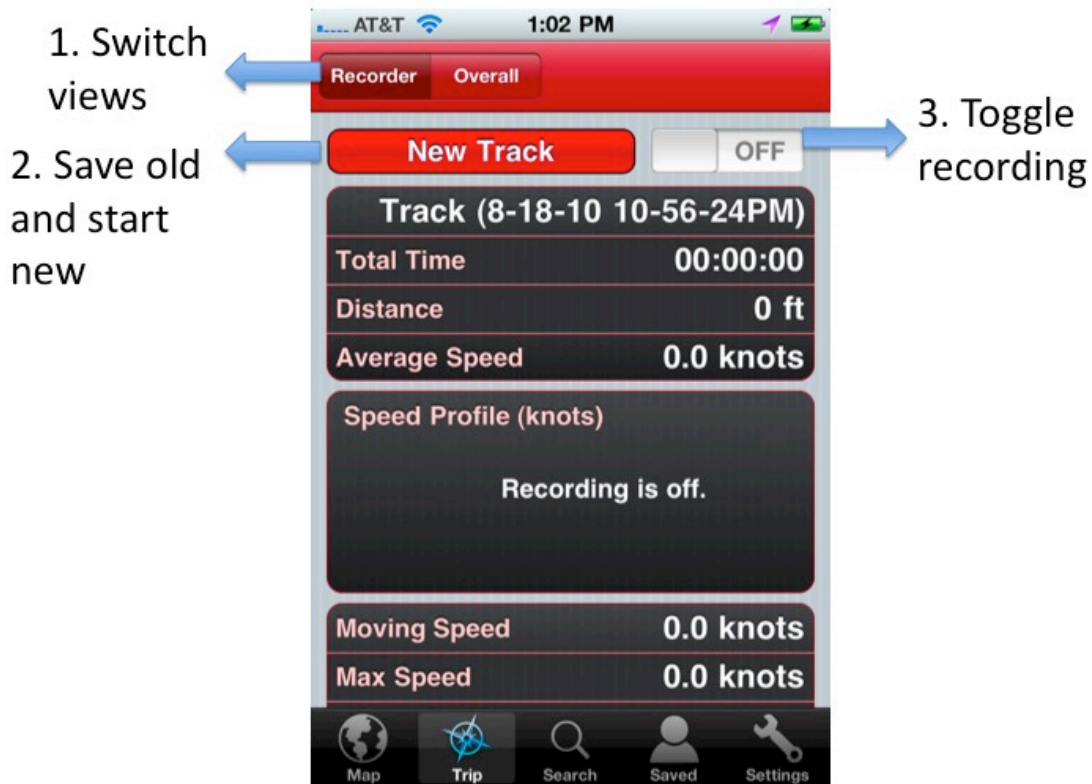
5. Layers - Use the layer button to select different available base maps and overlays. Supported base maps include EarthNC's NOAA Raster Charts, US Topographic Quad maps by myTopo, and road maps by OpenStreetMap. Overlay options include your personal, saved waypoints, the EarthNC Points of Interest, and a realtime Nexrad RADAR overlay which updates every 10 minutes. The Nexrad overlay requires an active data connection.

Interacting with Points of Interest (POI's) - When POI's are enabled via the layers menu, you can click on individual icons to view additional information. If labels are off, the 1st tap will show the POI name. You can then tap on the tool (wrench) button next to the name to view additional details. Click on the Arrow button in the top right of the details window to email a waypoint or to activate Guide Me mode to that POI. Note that Guide Me does not consider water depths or other hazards - so use responsibly.

Trip Screen

The Trip Screen lets you create and save tracks, which can later be edited and exported.

If you were recording a track in your last session, Marine Charts will automatically load it when you turn on the app. In iOS 4.0 and higher, when you leave the app, it will continue to record unless you completely close the app via the iPad task bar (press the home button twice, press and hold the Marine Charts App icon, tap the minus sign to close the app). Track recording uses the GPS even if the app isn't in view and will affect battery life.



Tip: Double tap the table to *rearrange* it.

1. (& 2) New Track - If you are currently recording a track when you start a new one, it will be saved. You can edit the title of tracks via their details page in the Saved - Tracks menu.

3. On/Off - Turn the recorder on or off. By default, if you had these switches on when you turn the app off, they will be on again when you turn the app on again.

Explanation of Statistics

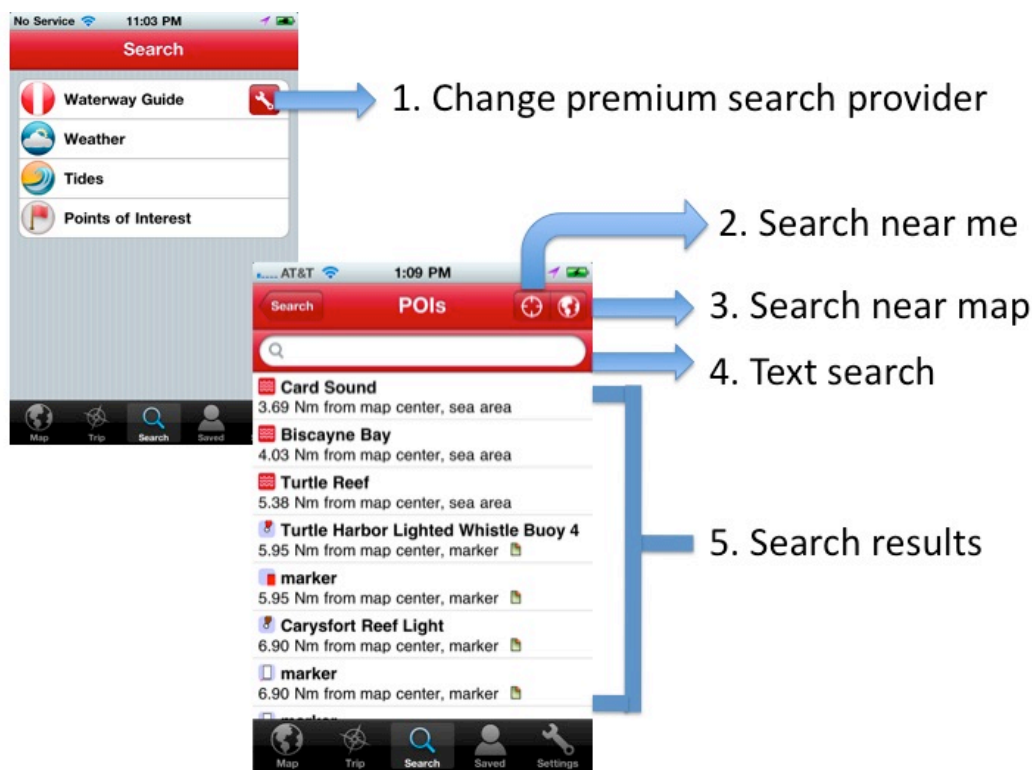
- Distance - total distance traveled
- Average Speed - Your average speed while recording the track
- Moving Speed - Your average moving speed, basically your average speed excluding any times you stopped
- Current Speed - Your speed right this second
- Total Time - Total time elapsed
- Moving Time - Time elapsed while moving
- Stopped Time - Time elapsed while stopped
- Pace - The inverse of speed, a metric often used by runners.
- Sunrise/Sunset - The times, give or take a few minutes, for the sunrise/sunset at your location.

Points of Interest (POIs)

The POIs Screen gives you information about the waters around you and allows you to search for places, tides, and weather. You can browse through thousands of Anchorages, Marinas, Bridges and more provided by Cruisersnet.net, Marinalife, and Waterway Guide.

Marine Charts also allows you to instantly get the latest updates from Tide and Weather buoys around the United States, as well as browse popular points of interest for boaters.

These waypoints also display on the map - each time you pan or zoom the map if EarthNC Waypoints is enabled in the Map Layers menu, Marine Charts fetches waypoints from the internet. Clicking on a waypoint on the map will display the same information as clicking on a waypoint in the POI table.



1. Change premium search provider - Click the wrench icon to choose which data provider you would like to browse. You can choose from CruisersNet.net, Marinalife, and Waterway Guide.

2. Search near me - Press this button to find information about your current location.

3. Search near map - Press this button to find information about the area you are currently viewing on the map.

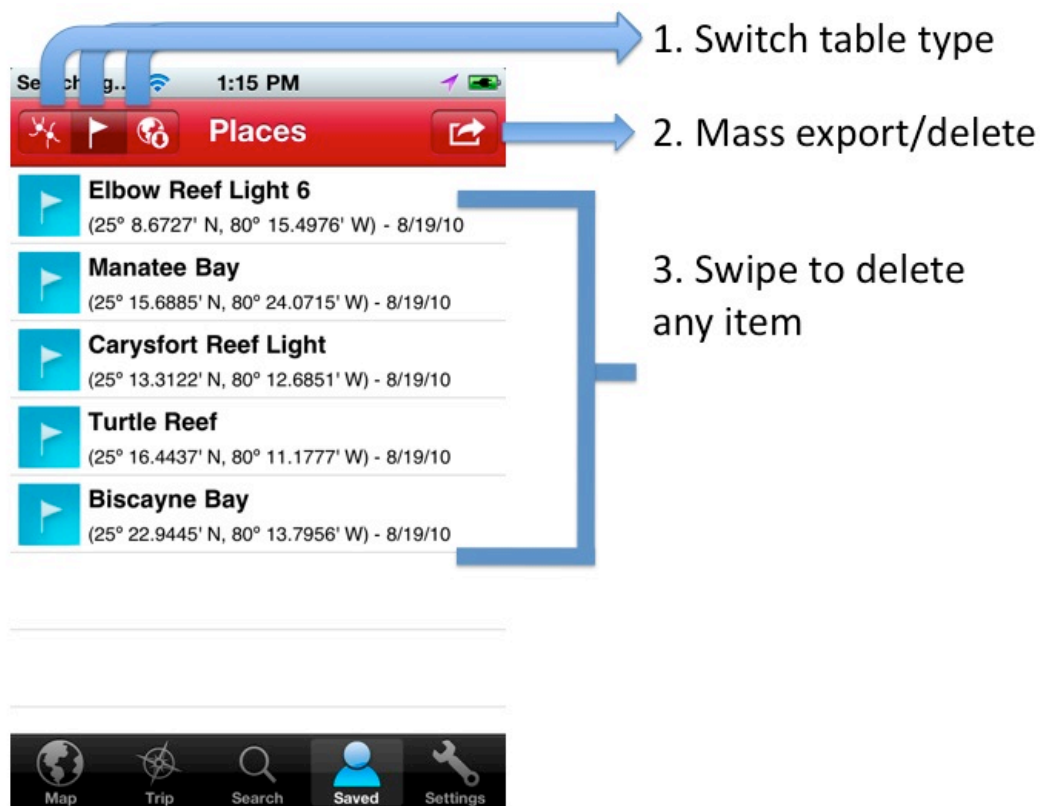
4. Text search - if you know the name of a particular waypoint you can search for it here. The search will focus on the map center, or your location, depending on which of the top search buttons you last used. It defaults to map center.

5. Search results - Click a particular search result to see more information about that item and to see its location on the map.

Saved Screen

The Saved Screen is where you can view and export your saved tracks, waypoints, and maps.

You can display any of your saved things on the map, guide to waypoints and along tracks, resume recording tracks, and export your data via email.



1. Switch table type - Your saved data is broken up into three tables that you can toggle between using the top buttons: 1) Tracks 2) Waypoints and 3) Maps.

2. Mass export/delete - This button displays export and delete options for the currently selected table. For example, if you are looking at the Tracks table, you can export or delete

all tracks via this menu. This menu also displays an "Export Everything" button, which lets you export all of your tracks and waypoints in one batch.

3. Table information - Click a row in the table to bring up the detail screen for the item.

Detail screens allow you to:

- Get guidance to waypoints and along tracks
- Display waypoints or tracks on the map
- View statistics for a track (click the mini-map to reveal the stats)
- Load and center on a saved map

Other Notes:

- When you import a GPX file, the track will be placed under your track list, and the waypoints from the track will go in your waypoints list. If you load a track to display on the map, all of its waypoints will show up as well.

Settings Screen

The Settings screen lets you adjust settings for all Marine Charts screens, provides "About Us" type information, and links to online help documentation. You can also reset the app from this page if you'd like to clear all of your data and restore Marine Charts to its original state.

